



# North Tech WINDOWS AND DOORS



# CERTIFICATION

**QAI LABORATORIES**  
 21 Road Group Division, Unit No. 2  
 Vaughan, Ontario L4H 1R3  
 (416) 470-8800  
 www.qai.com

CLIENT: Beijing North Tech Glass Co. Ltd.  
 #0302-115210 George Street  
 Vancouver, British Columbia

Test Report No: BUR0009-GW-C Issue Date: May 15, 2023

SAMPLE ID: Beijing North Tech Glass Co. Ltd. N152 Series Lift and Slide Sliding Door.  
 SAMPLING DETAIL: Test sample information was submitted directly to QAI for evaluation.

DATE OF RECEIPT: Documentation was received between February 13, 2023 and May 2, 2023 from Beijing North Tech Glass Co. Ltd.

TESTING PERIOD: Evaluation was conducted between May 2, 2023 and May 8, 2023.

AUTHORIZATION: Proposal 23M701202 signed by Dong Cai on February 10, 2023.

TEST PROCEDURE: Thermal simulation evaluation was performed following the methods outlined in the following standard:  
 CSA A440.2-19 Fenestration Energy Performance.

TEST RESULTS: Based on evaluation conducted by QAI, energy performance values for N152 Series Lift and Slide Sliding Door are as listed in the Test Results section of this report for glazing options evaluated.

Prepared By: *Jim Scott* Project Manager  
 Reviewed By: *Neil Dumont* Fenestration Reviewer

**TÜV Rheinland**

Test Report - Products  
 Fenestration - Windows

Test report no.: 80279808-01 Order No.: 80279808 Page 1 of 5  
 Test report ref.: 80279808-01 Page 1 of 5

Client Reference No.: PO no. 1947842 Order date: 2024-01-24  
 Manufacturer ref.: Order ref.: Oprechtorium

Client: Beijing North Tech Windows Co., Ltd.  
 No. 3 Dongjinhai Road, Daxingmen, Xichang District, Beijing, China

Test Item: Sliding Door  
 Test concept: 152 series

Identification: Type No.: 152 series  
 Dimension / Type no.:

Order reference: Tests which have been performed in order to establish whether or not the building product meets the applicable requirements of EN 14353-1.

Test specification: EN 14353-1:2006 + A2:2016\*

Test description: Windows and doors - Product standard, performance characteristics - Part 1, windows and external pedestrian doors

Date of sample receipt: 2023-12-04  
 On-site inspection monitor:

Test sample No.: QCI-2023-0149H  
 Test method no.:

Testing period: 2023-12-04 - 2023-12-08  
 Test location:

Place of testing: Gaoxindian City, Henan Province  
 Testing laboratory: QAI

Test result: Pass

Tested by: gmo@tuev.com  
 Date: 2024-01-22  
 Date of issue: 2024-02-07  
 Date of validity: 2024-02-07

Position / function: Expert TÜV Rheinland (Shanghai) Co., Ltd.  
 Position / function: Expert TÜV Rheinland Nederland B.V.

Others: \* Tests were performed at the laboratory of China Academy of Building Research (CABR), 38 North 2nd Street, Beijing, China, and at the laboratory of TÜV Rheinland at the location of the test site.

**CERTIFICATE**  
 Certified Passive House Component  
 Component ID: 136 (valid until 31st December 2023)

Passive House Institute  
 Dr. Wolfgang Feist  
 86833 Darmstadt, Germany

Category: Window Frame  
 Manufacturer: Beijing North Tech Glass Co. Ltd  
 Beijing, China

Product name: ES91

This certificate was awarded based on the following criteria for the warm, temperate climate zone

Comfort  $U_{g,w} = 1.00 \leq 1.00 \text{ W/(m}^2 \cdot \text{K)}$   
 $U_{g,w,trans} \leq 1.05 \text{ W/(m}^2 \cdot \text{K)}$   
 with  $U_{g,w} = 0.90 \text{ W/(m}^2 \cdot \text{K)}$

Hygiene  $f_{hw,0.25} \geq 0.65$

Passive House efficiency class:  $\eta_{E+}$   $\eta_{D}$   $\eta_{C}$   $\eta_{B}$   $\eta_{A}$

www.passivehouse.com

**NFRC Product Certificate of Authorization**

Manufacturer: Beijing North Tech Group LTD  
 Street: Room 315, 3/F, Building 6  
 City/State/Zip: Beijing, China 100000

Product Series: N8000 Dual Action Window  
 Product Type: DATT

Simulation Lab: SAT1 Test Lab: TAT1  
 Site Report #: Q1365-02-116-45-RD Test Report #: Q1367-02-116-44  
 Site Report Date: 04/03/2024 Test Date: 01/23/2024  
 Revised Date: 01/23/2024

Auth. Ratings: U-Factor, SHGC, VT, CR Test Method: NFRC 102  
 Procedural Year: 2017

Initial Certification Date: 05/23/2024  
 Re-Certification Date:  
 Expiration Date: 01/23/2029

CPD Product Line Number: BNG-64.6  
 Product Number Range: 00001-00001 to 00001-00001

Comments: N/A

I hereby certify that all requirements for NFRC Certification Authorization have been met and that the above information is true and correct, to the best of my knowledge.

Authorized & Signed: *[Signature]*

As of May 15, 2024 NFRC Certification Authorization Page 1

**intertek**  
 TEST REPORT

Beijing North Tech Group Ltd.

**COMPUTER SIMULATION REPORT**

SCOPE OF WORK  
 N152 SYSTEM SLIDING DOOR - NFRC 102/100/500

REPORT NUMBER: Q1367-02-116-44-51  
 TEST DATE: 09/07/23

ISSUE DATE: 09/07/23 REVISION DATE: 09/19/23

PAGES: 50

DOCUMENT CONTROL NUMBER  
 RT-8-ZM6E-Test-4044 (04/11/22)  
 02037-INTERTEK

**NFRC Product Certificate of Authorization**

Manufacturer: Beijing North Tech Group LTD  
 Street: Room 315, 3/F, Building 6  
 City/State/Zip: Beijing, China 100000

Product Series: N8000 System Casement Window  
 Product Type: CSWV

Simulation Lab: SAT1 Test Lab: TAT1  
 Site Report #: Q1365-02-116-45-RD Test Report #: Q1369-02-116-46  
 Site Report Date: 04/03/2024 Test Date: 01/23/2024  
 Revised Date: 01/23/2024

Auth. Ratings: U-Factor, SHGC, VT, CR Test Method: NFRC 102  
 Procedural Year: 2017

Initial Certification Date: 05/23/2024  
 Re-Certification Date:  
 Expiration Date: 01/23/2029

CPD Product Line Number: BNG-64.6  
 Product Number Range: 00001-00001 to 00001-00001

Comments: N/A

I hereby certify that all requirements for NFRC Certification Authorization have been met and that the above information is true and correct, to the best of my knowledge.

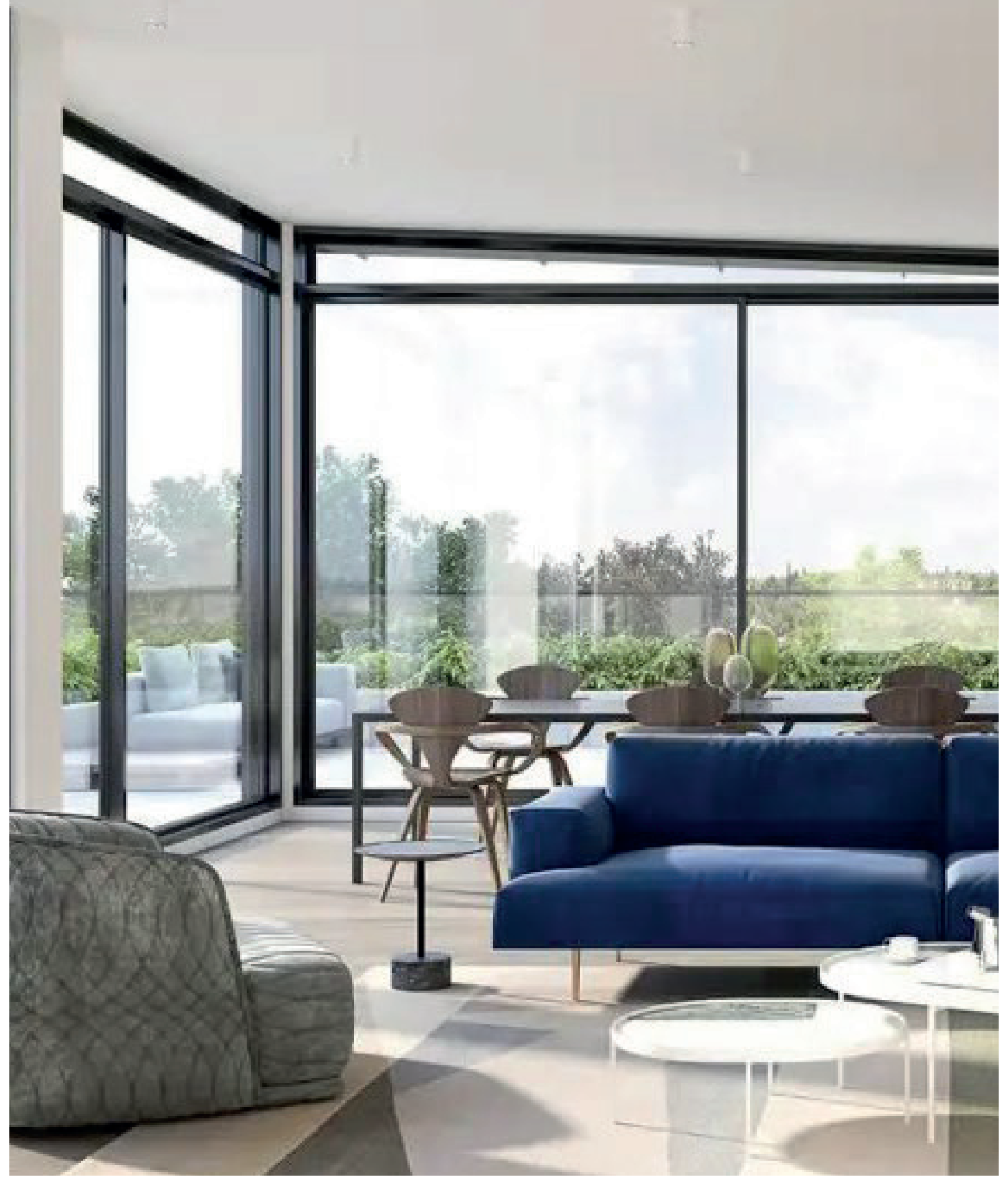
Authorized & Signed: *[Signature]*

As of May 15, 2024 NFRC Certification Authorization Page 1

# ADVANTAGE



**NORTHTECH**  
WINDOWS USA





**Equilibrium line design and thermally broken insulation structure, using PA66 nylon thermal break spacers, effectively isolates energy exchange between indoor and outdoor environments, providing excellent thermal insulation and heat preservation performance.**



**Insulated glass effectively blocks sound transmission, further enhancing noise reduction. The entire window can reduce noise levels by at least 35 dB.**



**Multi-point locking design ensures stronger sealing of doors and windows, providing enhanced security and better anti-theft performance.**



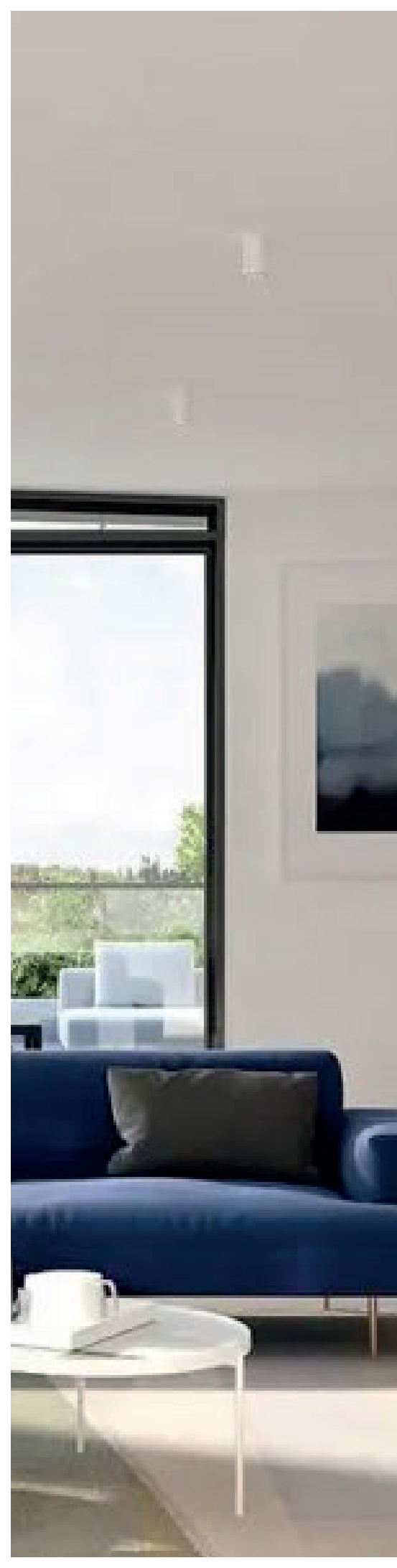
**The combination of system injection molding technology and internal drainage principles ensures the water tightness of the entire window.**



**Triple sealing design with multiple soft and hard co-extruded sealing strips effectively ensures the proper operation of the ventilation system.**



**Constructed with high-strength aluminum alloy, offering superior wind pressure resistance and confidently **withstanding stormy weather.****

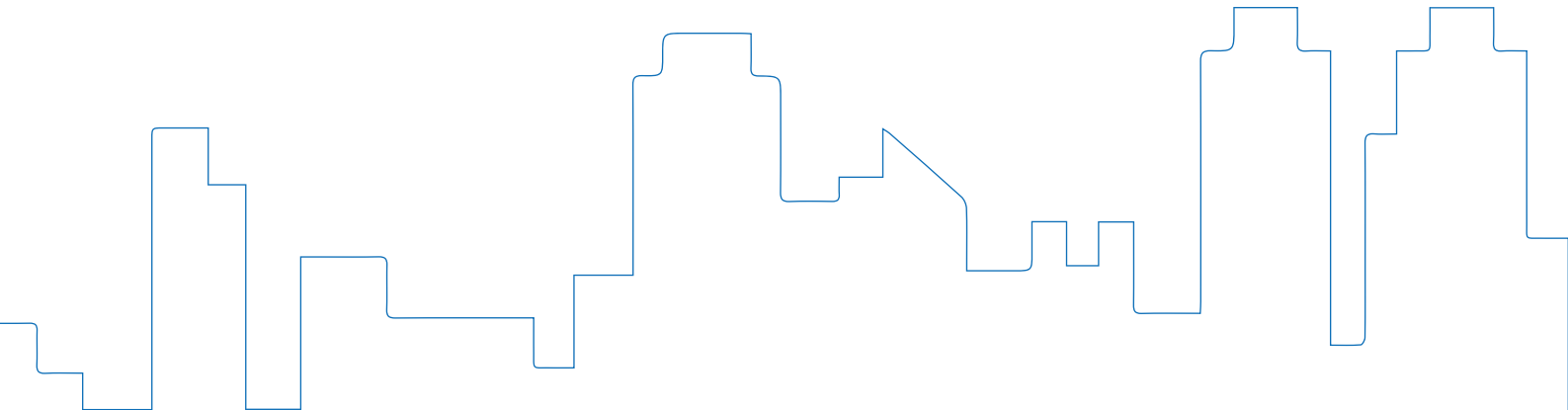


# DIRECTORY

## 01

### WINDOWS

<b>N8000 Windows Series</b>	<b>01</b>
<b>N8200 Windows Series</b>	<b>02</b>
<b>NJ1380 Aluminum Sliding Window</b>	<b>03</b>
<b>NL8520 Slimline Windows</b>	<b>04</b>
<b>NL8500 Screen-Integrated Doors And Windows</b>	<b>05</b>
<b>Aluminum Cladding Wood Windows &amp; Doors</b>	<b>06</b>
<b>NJ1030/NJ8000 Slimline Inward Opening Aluminum Clad Wood Window</b>	<b>07</b>
<b>NH9700 Slimline Aluminum Clad Wood Window</b>	<b>08</b>
<b>NT91 Passive House Windows</b>	<b>09</b>
<b>NT81 Aluminum Window Series</b>	<b>10</b>



# 02

## DOORS

<b>NP150 Air Tight Side-Push Sliding Door</b>	<b>11</b>
<b>N152 Lift And Sliding Door</b>	<b>12</b>
<b>NY150 Panoramic Sliding Door</b>	<b>13</b>
<b>NZ1250 Slimline Sliding Door</b>	<b>14</b>
<b>NW1400 Multi-Track Sliding Door</b>	<b>15</b>
<b>ND1440 Multi-Track Sliding Door</b>	<b>16</b>
<b>NE110 Passive House Swing Door</b>	<b>17</b>
<b>NZ8000 Folding Door</b>	<b>18</b>
<b>Window Wall</b>	<b>19</b>
<b>Curtain Wall</b>	<b>20</b>
<b>Windows &amp; Doors Process Display</b>	<b>21</b>
<b>Thermal Engineering Diagram</b>	<b>22</b>
<b>Railings</b>	<b>23</b>
<b>Patented Drainage Design</b>	<b>24</b>

# 03

## OTHERS

<b>Options</b>	<b>25-30</b>
<b>Cooperation Partners</b>	<b>31-32</b>
<b>Loading</b>	<b>33</b>
<b>Glance At Workshop</b>	<b>34-36</b>

# 04

## PROJECTS REFERENCE

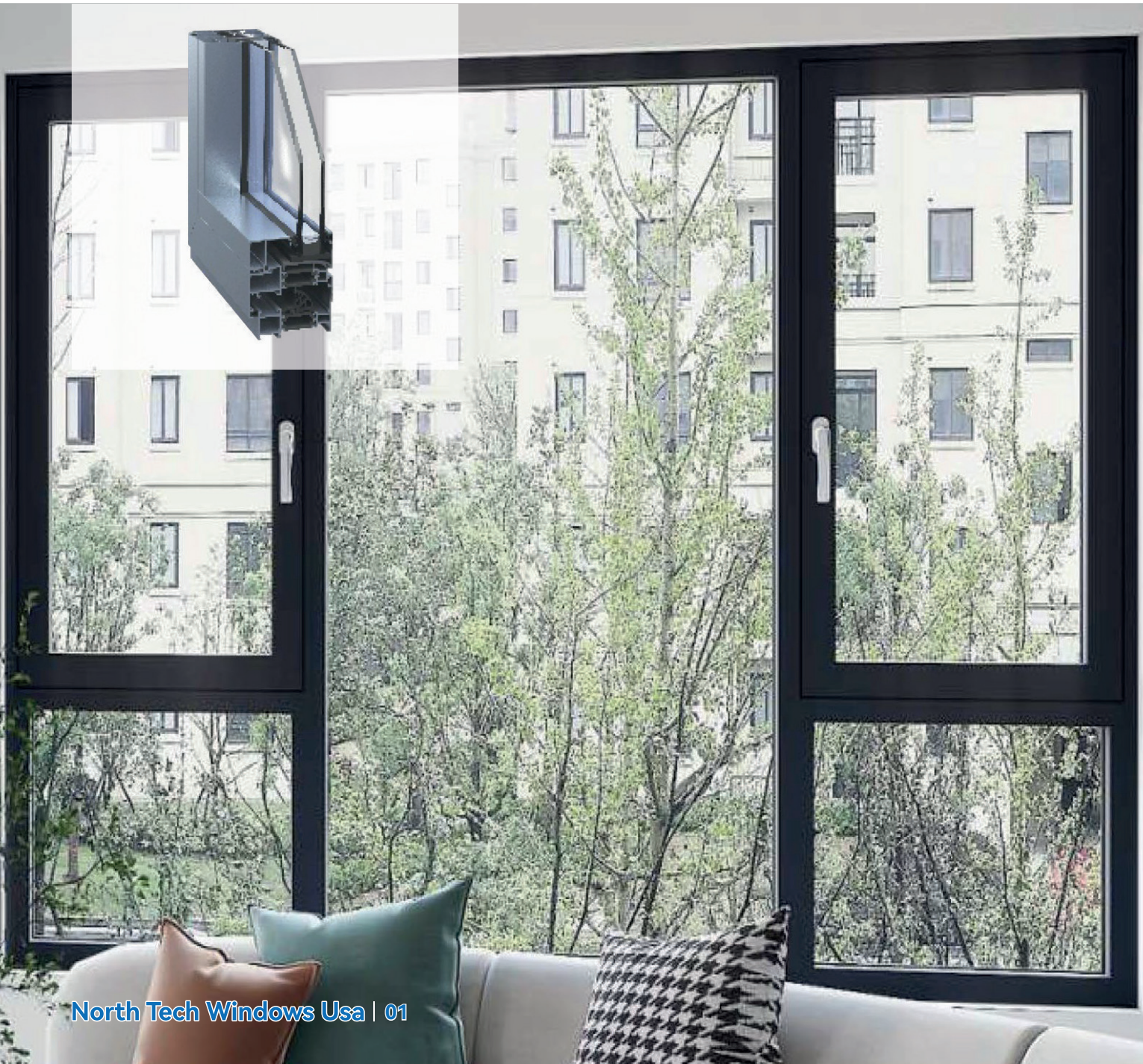
<b>Projects Reference</b>	<b>37-54</b>
---------------------------	--------------

# N8000

## WINDOWS SERIES



- Thermally Broken Aluminum: 6060-T66/6063-T5
- Profile Thickness:  $\geq 1.8\text{mm}/0.07''$
- Thermal Material: 33mm/1.3" PA66
- Finishes: Powder Coating, Anodized, PVDF Painting
- Frame Depth: 70mm/2.8"
- Weather Seal: EPDM
- Glass: Double or Triple Glazed, Low-e Insulating Glass, Argon Filled, TPS Glass
- Hardware: SIEGENIA, HOPPE
- Drainage: Weep Holes
- Styles: Fixed Window, Awning Window, Casement Window, Dual-Action Window, Shaped Window
- Screen: 0.2mm/0.008" Stainless Steel Screen, Fiberglass Screen
- Sound Insulation:  $\geq 36\text{dB}$
- **Quality Standard**NAFS, NAMI, NFRC, CSA



# THERMAL BREAK ALUMINUM WINDOW



## N8200

### WINDOWS SERIES



- Thermally Broken Aluminum: 6060-T66/6063-T5
- Profile Thickness:  $\geq 1.8\text{mm}/0.07''$
- Thermal Material: 35.3mm/1.4" PA66
- Finishes: Powder Coating, Anodized, PVDF Painting
- Frame Depth: 76mm/3"
- Weather Seal: EPDM
- Glass: Double or Triple Glazed, Low e Insulating Glass, Argon Filled, TPS Glass
- Hardware: SIEGENIA, HOPPE, SOBINCO
- Drainage: Weep Holes/Hidden Hole Drainage
- Styles: Awning Window, Casement Window, Dual-Action Window
- Screen: Stainless Steel Screen, Fiberglass Screen

# ALUMINUM SLIDING WINDOW

## NJ1380

# ALUMINUM SLIDING WINDOW



- Thermally Broken Aluminum: 6063-T5/6060-T66
- Profile Thickness: 1.8mm/0.07"
- Surface Sight Line: 35mm/1.3" (Frame+Sash)
- Finishes: Powder Coating, Anodized, PVDF Painting
- Frame Depth: 138mm/5.4"

- Weather Seal: EPDM
- Glass: Double or Triple Glazed, Low e Insulating Glass, Argon Filled, TPS Glass
- **Drainage: Hidden Hole Drainage**
- Screen: 0.4mm/0.02" Sliding Stainless Steel Screen

# SLIMLINE WINDOW SERIES

## NL8520

### SLIMLINE WINDOWS




- Thermally Broken Aluminum: 6060-T66/6063-T5
- Profile Thickness: 2mm/0.07"
- Thermal Material: 35.3mm/1.39" PA66
- Hardware: SIEGENIA, SOBINCO
- Finishes: Powder Coating, Anodized, PVDF Painting
- Surface Sight Line: 48mm/1.8"
- Frame Depth: 85mm/3.34"
- Weather Seal: EPDM
- Glass: Double or Triple Glazed, Low-e Insulating Glass, Argon Filled, TPS Glass
- Drainage: Weep Holes
- Styles: Fixed Window, Tilt & Turn Window
- Feature: Slimline Surface
- **Quality Standard**NAFS, NAMI, NFRC, CSA





# SCREEN-INTEGRATED WINDOWS



# NL8500

## SCREEN-INTEGRATED DOORS AND WINDOWS

- Thermally Broken Aluminum: 6060-T66/6063-T5
- Profile Thickness:  $\geq 1.8\text{mm}/0.07\text{"}$
- Thermal Material: 45.3mm/1.78"PA66
- Finishes: Powder Coating, Anodized, PVDF Painting
- Frame Depth: 85mm/3.4"
- Weather Seal: EPDM
- Glass: Double or Triple Glazed, Low-e Insulating Glass, Argon Filled, TPS Glass
- Hardware: FSB
- Drainage: Weep Holes
- Styles: Fixed Window, Awning Window, Casement Window, Dual-Action Window, Shaped Window
- Screen: 0.2mm/0.008" Stainless Steel Screen, Fiberglass Screen
- Sound Insulation:  $\geq 36\text{dB}$

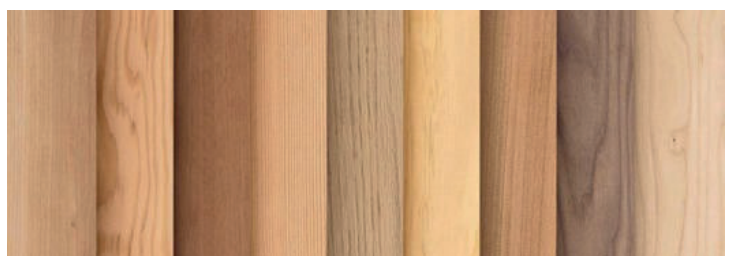
# ALUMINUM CLADDING WOOD WINDOWS & DOORS

- Style: Casement, Awning, Tilt and Turn, Picture, Geometric, Bay or Bow, Single Hinge Door, Double French Door, **Sliding Door**.
- 8 kinds of rare wood: White Oak, Red Oak, Larch and Pine, Sapele, Cherry, Catalpa, Douglas Fir, Walnut.
- It conforms to the waterproof grade requirements of DINEN204-D3&D4 in Germany.
- Exceed NFRC NAFS CSA standard.



Available in a variety of styles including:

- **Awning**
- **Picture**
- **Bay or Bow**
- Double French Door
- **Sliding Door**
- Casement
- Tilt&Turn
- **Geometric**
- **Single Hinge Door**



# ALUMINUM CLAD WOOD WINDOW

## NJ1030

### SLIMLINE INWARD OPENING ALUMINUM CLAD WOOD WINDOW

- Thermally Broken Aluminum: 6063-T5/6060-T66
- Styles: Picture Window, Tilt&Turn Window, and Other Basic/Special-Shape Windows
- Wood: Red Oak Wood, Cherry Wood, Larch Wood, etc.
- Surface Sight Line: 48mm/1.9"
- Frame Depth: 103mm/4.1"
- Finishes: Aluminium frame Powder Coating, Anodized, PVDF Painting
- Glass: Double or Triple Glazed, Low e Insulating Glass, Argon Filled, TPS Glass
- Hardware: MACO, HOPPE, SOBINCO
- **Drainage: Hidden Hole Drainage**
- Feature: Slimline Surface Flush

Lorem ipsum



## NJ8000

### SLIMLINE INWARD OPENING ALUMINUM CLAD WOOD WINDOW

- Thermally Broken Aluminum: 6063-T5/6060-T66
- Styles: Picture Window, Tilt&Turn Window, and Other Basic/Special-Shape Windows
- Wood: Red Oak Wood, Cherry Wood, Larch Wood, etc.
- Frame Depth: 80mm/3.1"
- Finishes: Aluminium frame Powder Coating, Anodized, PVDF Painting
- Glass: Double or Triple Glazed, Low e Insulating Glass, Argon Filled, TPS Glass
- Hardware: HOPPE, SOBINCO
- **Drainage: Hidden Hole Drainage**



# ALUMINUM CLAD WOOD WINDOW



**NORTHTECH**  
WINDOWS USA

- Wood: American Oak Wood; American Cherry Wood; North American Black Walnut; Burmese Black-Streaked Teak; Burmese Rosewood
- Styles: Tilt&Turn Window, etc.
- Frame Wood Depth: 78mm/3.0"
- Frame Aluminum Depth: 16mm/0.63"
- Frame Overall Thickness: 97mm/3.8"
- Thermally Broken Aluminum: 6063-T5/6060-T66
- Profile Thickness: 1.8mm-2.5mm/0.07"-0.09"
- Hardware: WINKHAUS(Window)+HOPPE or FSB(Handle), ROTO(Door)+HOPPE(Handle)
- Finishes: Aluminium frame Powder Coating, Anodized, PVDF Painting
- Weather Seal: Standard with SLGE wrap-around sealing strip imported from Germany
- Glass: Double or Triple Glazed, Low e Insulating Glass, Argon Filled, TPS Glass
- **Screen: Stainless Steel Screen**
- Colors: Custom Colors
- Feature: Certified With NAFS, NFRC

## NH9700



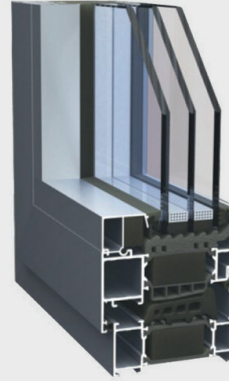
## SLIMLINE ALUMINUM CLAD WOOD WINDOW

# NT91

## PASSIVE HOUSE WINDOWS



 **NORTHTECH**  
WINDOWS USA



- Thermally Broken Aluminum: 6060-T66/6063-T5
- Profile Thickness: 1.8mm/0.07", Door 2.2mm/0.08"
- Thermal Material: 54mm/2.1" PA66
- Finishes: Powder Coating, Anodized, PVDF Painting
- Frame Depth: 91mm/3.6"
- Weather Seal: EPDM
- Glass: Double or Triple Glazed, Low e Insulating Glass, Argon Filled, TPS Glass
- Hardware: SIEGENA, ROTO, GU
- Drainage: Hidden Drainage or Weep Holes
- Style: Tilt&Turn Window, Casement Window
- Screen: 0.2mm/0.008", Casement Stainless Steel Screen
- Colors: Custom Colors
- Feature: Passed the German PHI certification,  $U_w < 1.0 \text{ W / (m}^2\text{.k)}$  NAFS AND NFRC

**PASSIVE HOUSE WINDOW**



- Thermally Broken Aluminum: 6060-T66/6063-T5
- Profile Thickness: 1.8mm / 0.17"
- Thermal Material: 44mm / 1.7", PA66
- Finishes: Powder Coating, PVDF Painting, Anodizing
- Styles: Fixed Window, Tilt&Turn Window, Casement Window, Awning Window
- Frame Depth: 81mm / 3.1"
- Weather Seal: EPDM
- Glass: Tempered Double /Triple Pane Low-E Insulating Glass, Argon filled, TPS
- Hardware: SIEGENIA, KINLONG
- Drainage: Weep Holes/ Hidden Hole Drainage
- Bug Screen: Stainless Steel Screen; Fiberglass Screen
- Sightline: Open Sash: 26-31mm/1.02"-1.22" , Frame: 50mm / 1.96"

## WINDOW SERIES

# NT81

## ALUMINUM WINDOW SERIES



# THERMAL BREAK ALUMINUM DOOR

## NP150

### AIR TIGHT SIDE-PUSH SLIDING DOOR



- Thermally Broken Aluminum: 6060-T66 / 6063-T5
- Heat-insulating Strip: 30mm / 1.2", PA66
- Finishes: Powder Coating, PVDF Painting, Anodizing
- Frame Depth: 150mm / 5.9"
- Glass: High Performance Tempered Safety Low-E Insulating Glass
- Hardware: ROTO
- **Tracks: 2 Tracks**
- Bug Screen: Stainless Steel Sliding Screen; Fiberglass Retractable Screen
- Feature:
  - Open Sash Weight: 150kg-400 kg
  - Open Sash Width: 1500-3000 mm ( 59~118")
  - Open Sash Height :2000-3600 mm( 79~141")
  - Class AW-PG40, NAFS, CSA Standard.
  - Design Pressure:  $\pm 1920$  Pa (  $\pm 40$  psf )
  - Water Penetration: 720 Pa
- **Air Tightness: A3**
- U factor: 0.2- 0.25 Btu/Hr-Ft<sup>2</sup>-F
- Drainage Option: Weep Holes



# THERMAL BREAK ALUMINUM DOOR



## N152

### LIFT AND SLIDING DOOR



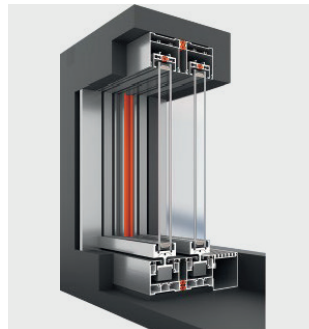
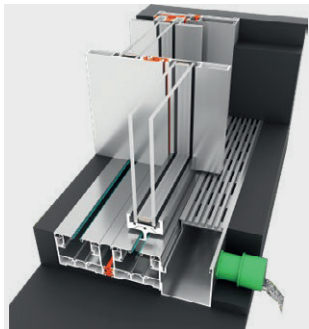
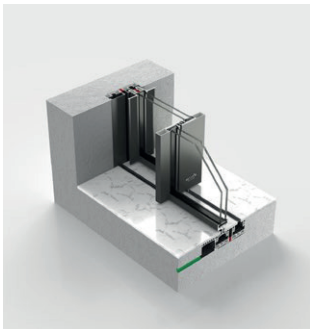
- Thermally Broken Aluminum: 6060-T66/6063-T5
- Heat-insulating Strip: 24mm/0.9"PA66
- Finishes: Powder Coating, Anodized, PVDF Painting
- Frame Depth: 152mm/6"
- Glass: High Performance Low e Insulating Glass, TPS Glass
- Hardware: SIEGENIA, GU
- **Tracks: 2 Tracks And 3 Tracks**
- Screen: 0.2mm/0.008", Stainless Steel Sliding Screen, Fiberglass Folding Screen
- Door Threshold Height: 56mm/2.2"
- Drainage Option: Weep Holes
- **Quality Standard**NAFS, NAMI, NFRC, CSA

# PANORAMIC SLIDING DOOR

## NY150

### PANORAMIC SLIDING DOOR

- Sound Insulation Performance: > 35dB
- Water - proof Performance:  $\Delta P \geq 600\text{Pa}$
- Air - tightness Performance:  $q_n \leq 1.0\text{m}^3/(\text{m} \cdot \text{h})$
- Wind Resistance Performance:  $P3 \geq 3.50\text{kPa}$
- Aluminum Profile: 6063-T5/6060-T66
- Size: 3400\*5000mm (133"\*196")
- Frame Thickness: 2.5mm/0.10" - 8mm/0.31"
- Frame Width: 150mm/5.91"
- Sightline: 50/24mm (1.97" /0.94" )
- Glass Standard: Insulating Glass Tempered, 5mm/0.20" + 18AR + 5mm/0.20" or 8mm/0.31" + 16AR + 8mm/0.31" TPS/ Warm Edge Spacer, Argon
- Warm Edge Material: PA66+GF25-S14.6mm/0.57" or 14.8mm/0.58"
- Sealing Strip: EPDM Sealing Strip
- Treatment: Fluorocarbon Spraying, Powder Coating, Anodizing
- Colors: Custom Colors



# THERMAL BREAK ALUMINUM SLIDING DOOR

## NZ1250

### SLIMLINE SLIDING DOOR



- Thermally Broken Aluminum: 6063-T5/6060-T66
- Profile Thickness: 3.5mm/0.14"
- Thermal Material: 24mm/0.9" (Frame) + 15mm/0.59" (Sash) PA66
- Finishes: Powder Coating, Anodized, PVDF Painting
- Surface Sight Line: 50mm/1.9"
- Frame Depth: 125mm/4.92"
- Sash Depth: 105mm/4.13" Width: 21mm/0.82"
- Weather Seal: EPDM
- Glass: 5mm/0.20" + 27AR + 5mm/0.20" , TPS Glass
- **Drainage: Hidden Hole Drainage**
- Max Single Sash Wide Size: 2500mm/98.43"
- Max Sash High Size: 3500mm/137.80"
- Threshold Height: 60mm/2.36(High Threshold) 124mm/4.88" Below Ground Level (Low Threshold)
- Features: NFRC / NAFS Certifications



**NORTHTECH**  
WINDOWS USA

# THERMAL BREAK ALUMINUM SLIDING DOOR

## NW1400

### MULTI TRACK SLIDING DOOR

- Thermally Broken Aluminum: 6060-T66/6063-T5
- Profile Thickness: 2.0mm/0.08"
- Finishes: Powder Coating, Anodized, PVDF Painting
- Frame Depth: 208mm/8"
- Glue: Weiss in Germany
- Weather Seal: EPDM

- Screen: 0.8mm/0.03" Sliding Stainless Steel Screen
- Glass: Double or Triple Glazed, Low-e Insulating Glass, Argon Filled TPS Glass
- Hardware: Top China Brand, SOBINCO
- Drainage: Weep Holes
- Colors: Custom Colors

# ALUMINUM SLIDING DOOR

# ND1440

# MULTI-TRACK SLIDING DOOR



- **Magnesia-aluminum Materials**
- Profile Thickness: 2.5mm/0.09"
- Finishes: Powder Coating, Anodized, PVDF Painting
- Frame Depth: 91mm/3.5" (Single Track), 137mm/5.3" (Double Tracks), 183mm/7.2" (Triple Tracks)
- Glass: Double or Triple Glazed, Low e Insulating Glass, Argon Filled, TPS Glass
- Hardware: Top China Brand
- Max Width: 1150mm/45"
- Max Height: 2600mm/102"





## PASSIVE HOUSE WINDOW AND DOOR

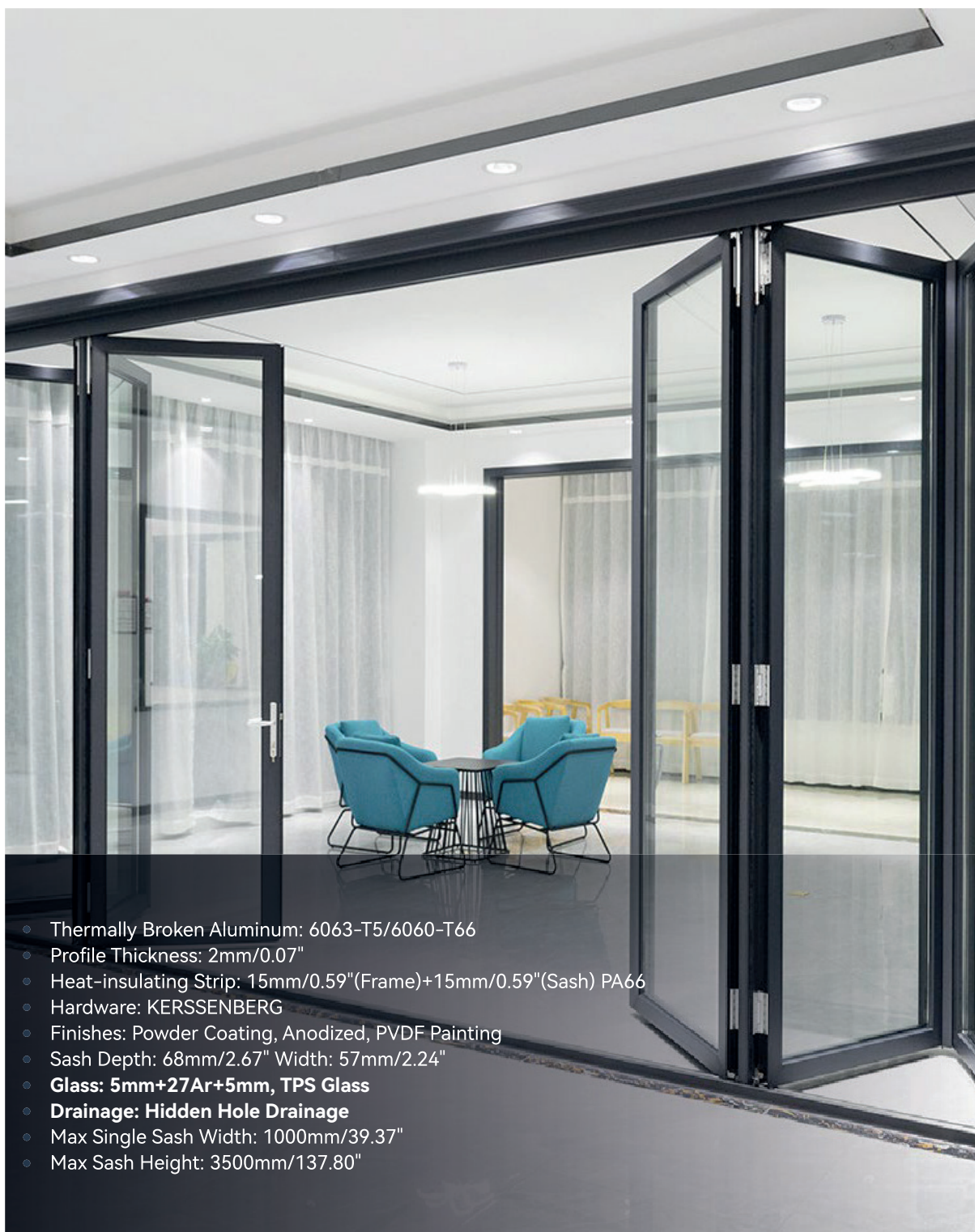
# NE110

## PASSIVE HOUSE SWING DOOR



- Thermally Broken Aluminum: 6060-T66/6063-T5
- Profile Thickness: 2.2mm/0.09"
- Thermal Material: 64mm/2.5" PA66
- Finishes: Powder Coating, Anodized, PVDF Painting
- Frame Depth: 110mm/4.3"
- Glue: Weiss in Germany
- Weather Seal: EPDM
- Glass: Double or Triple Glazed, Low e Insulating Glass, Argon Filled, **TPS Glass**
- Hardware: SIEGENIA, HOPPE, ROTO
- Drainage: Weep Holes
- Screen: 0.2mm/0.008", Casement Stainless Steel Screen
- Colors: Custom Colors
- Feature: Certified by German PHI Uw <0.8 w/m2.k

# ALUMINUM FOLDING DOOR



- Thermally Broken Aluminum: 6063-T5/6060-T66
- Profile Thickness: 2mm/0.07"
- Heat-insulating Strip: 15mm/0.59"(Frame)+15mm/0.59"(Sash) PA66
- Hardware: KERSENBERG
- Finishes: Powder Coating, Anodized, PVDF Painting
- Sash Depth: 68mm/2.67" Width: 57mm/2.24"
- **Glass: 5mm+27Ar+5mm, TPS Glass**
- **Drainage: Hidden Hole Drainage**
- Max Single Sash Width: 1000mm/39.37"
- Max Sash Height: 3500mm/137.80"

## NZ8000



## FOLDING DOOR

# WINDOW WALL

- Thermal Insulation:  $U \leq 0.3 \text{ BTU/h} \cdot \text{ft}^2 \cdot \text{F}$
- Acoustic Performance:  $>35 \text{ dB}$
- **Air Tightness: A3**
- Water Penetration:  $\geq 600 \text{ pa}$
- Wind Load Resistance:  $\geq 0.5 \text{ Kpa}$
- Sight Line View:  $55 \text{ mm} / 2.2''$
- Finishes: Powder Coating, Anodized, PVDF Painting
- Glass: Double or Triple Glazed, Low e Insulating Glass Argon Filled, TPS Glass
- Hardware: SIEGENIA, ROTO, HOPPE, GU
- Screen: Fiber Glass Screen



# CURTAIN WALL

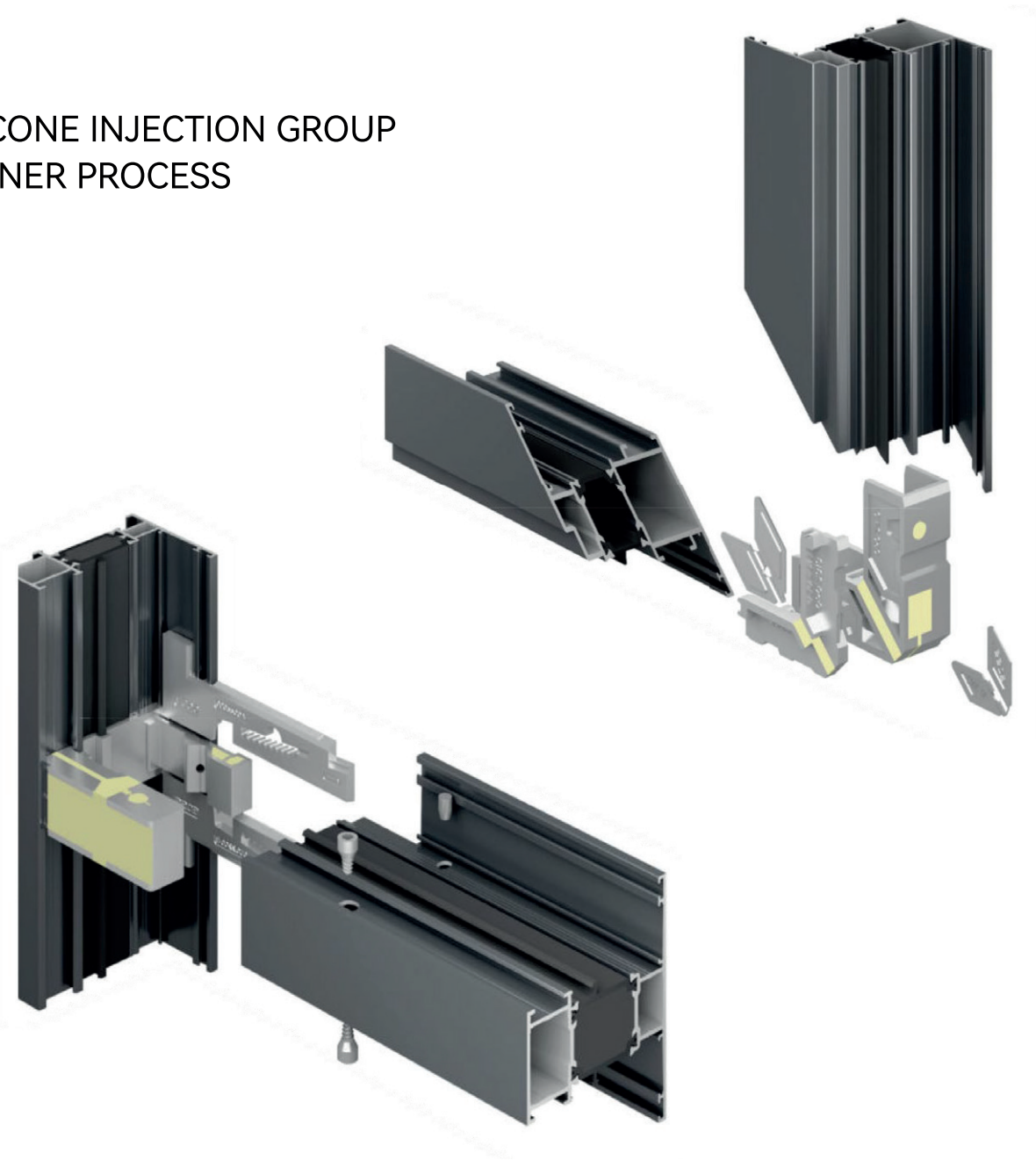
A fully structurally glazed system gives the appearance of a frameless glass facade. Double glazed as standard, With triple panel option. Sun shade bracket system allows the fixing of shading products to the frame without sacrificing structural or water performance. Proprietary mullion and building brackets provide a fully tested system.

- Stick Curtain Wall
- Energy Efficient
- Low e IG Unit IGCC SGCC
- Store Front
- Coatings: PVDF Painting/Anodizing/Powder Coating
- European&U.S. Brand Hardware
- Customized
- Thermal Break Aluminum
- AW&CW Level

## PERFORMANCE&SPECIFICATIONS:

- Class/AAMA Rating: AW-PG40
- Water Resistance-Pass @28.20 psf
- Mullion Thickness: 3.0 mm
- U-Value: Custom
- Design Wind Pressure  $\approx \pm 40.0 \text{psf} [(\pm 1.914 \text{kPa})]$
- 6063-T5 Aluminum Material, Anodized, Powder Coating, PVDF Painting
- STC  $\geq 38 \text{dB}$

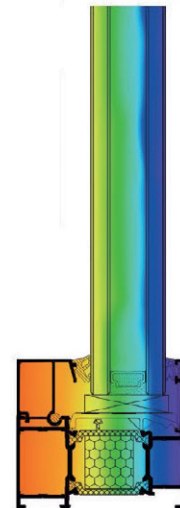
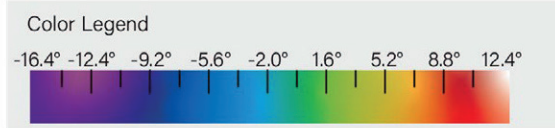
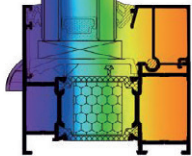
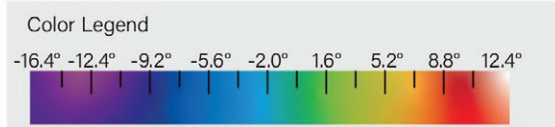
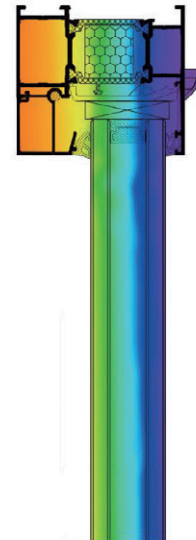
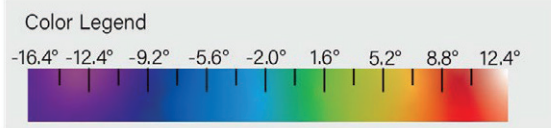
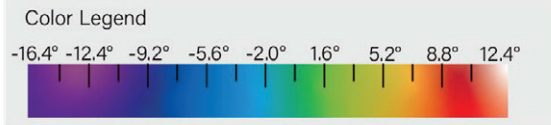
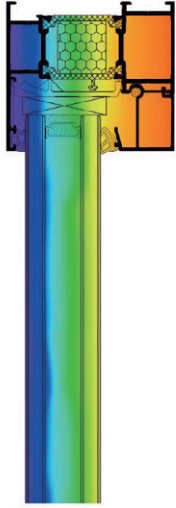
## SILICONE INJECTION GROUP CORNER PROCESS



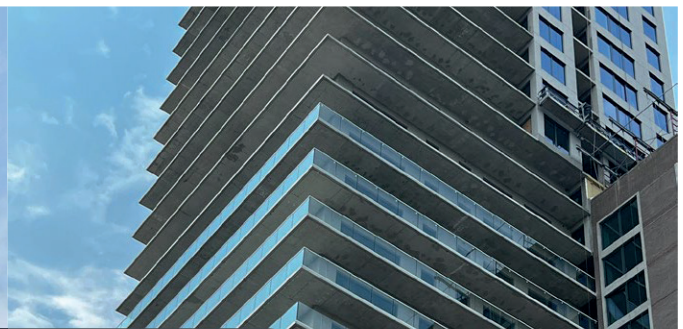
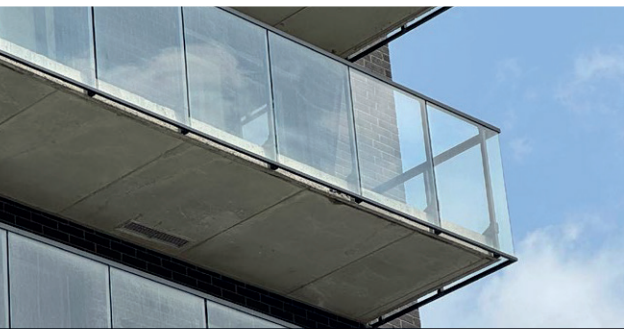
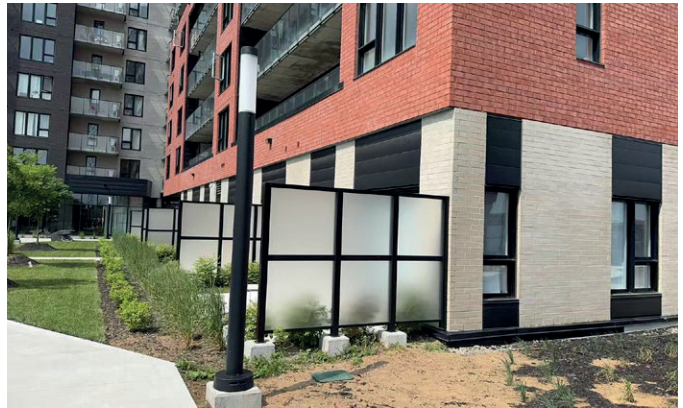
## CENTRE POST T-LINK TECHNOLOGY

- Centre Post T-Link Technology adopts North Tech patented technology and uses high pressure die casting aluminum alloy T- Link fittings, which realizes the pin connection **and silicone injection process and enhances the connection strength and sealing performance.**
- L-shaped locking corner connector further improves the strength and distortion **resistance of the connection part, so as to increase the wind load resistance and watertightness of windows and doors.**

# THERMAL ENGINEERING DIAGRAM



# RAILINGS

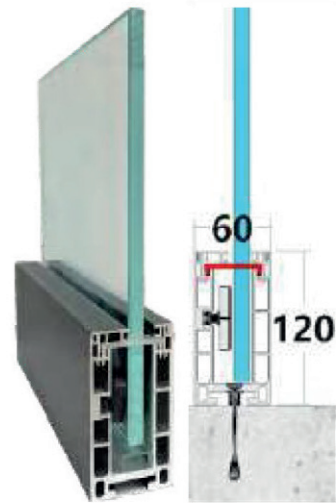
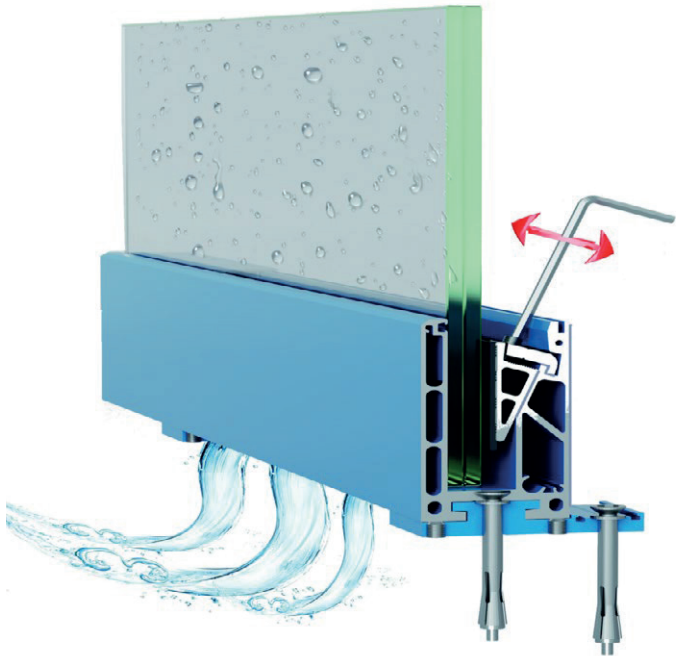


## CERTIFIED BALUSTRADES FOR BALCONY RAILINGS

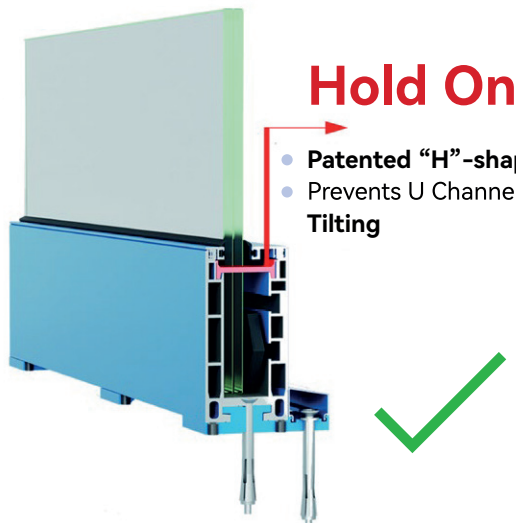
Make a balcony or roof terrace safe and extra beautiful with a balcony railing design that fits your needs. Choose from glass balustrades, stainless steel railings or balcony balustrades with aluminum balusters.



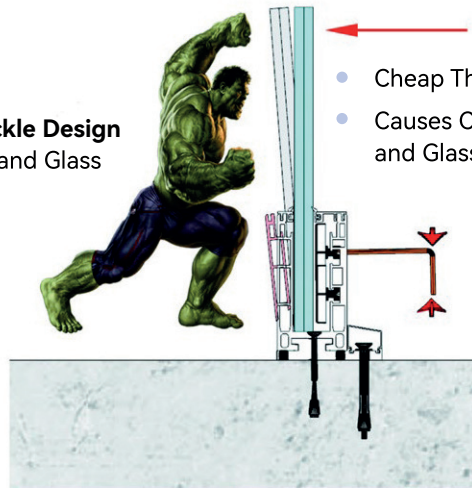
# PATENTED DRAINAGE DESIGN



- Ensure Smooth Rainwater Drainage
- Prevent Bacterial And Mosquito Breeding
- Avoid Water Immersion Of Light Strips
- Enhanced Stability With Dual Rows Of Screws



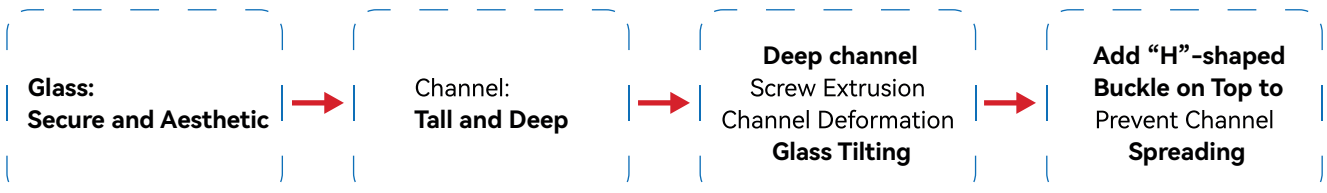
- Hold On**
- Patented "H"-shaped Buckle Design
  - Prevents U Channel Tilting and Glass Tilting



- Cheap Thin Aluminum Channel
- Causes Channel Deformation and Glass Squeezing



## Design Mind Map



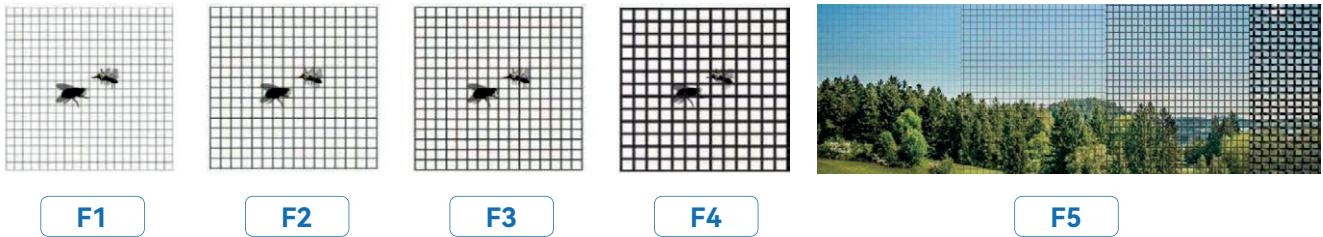
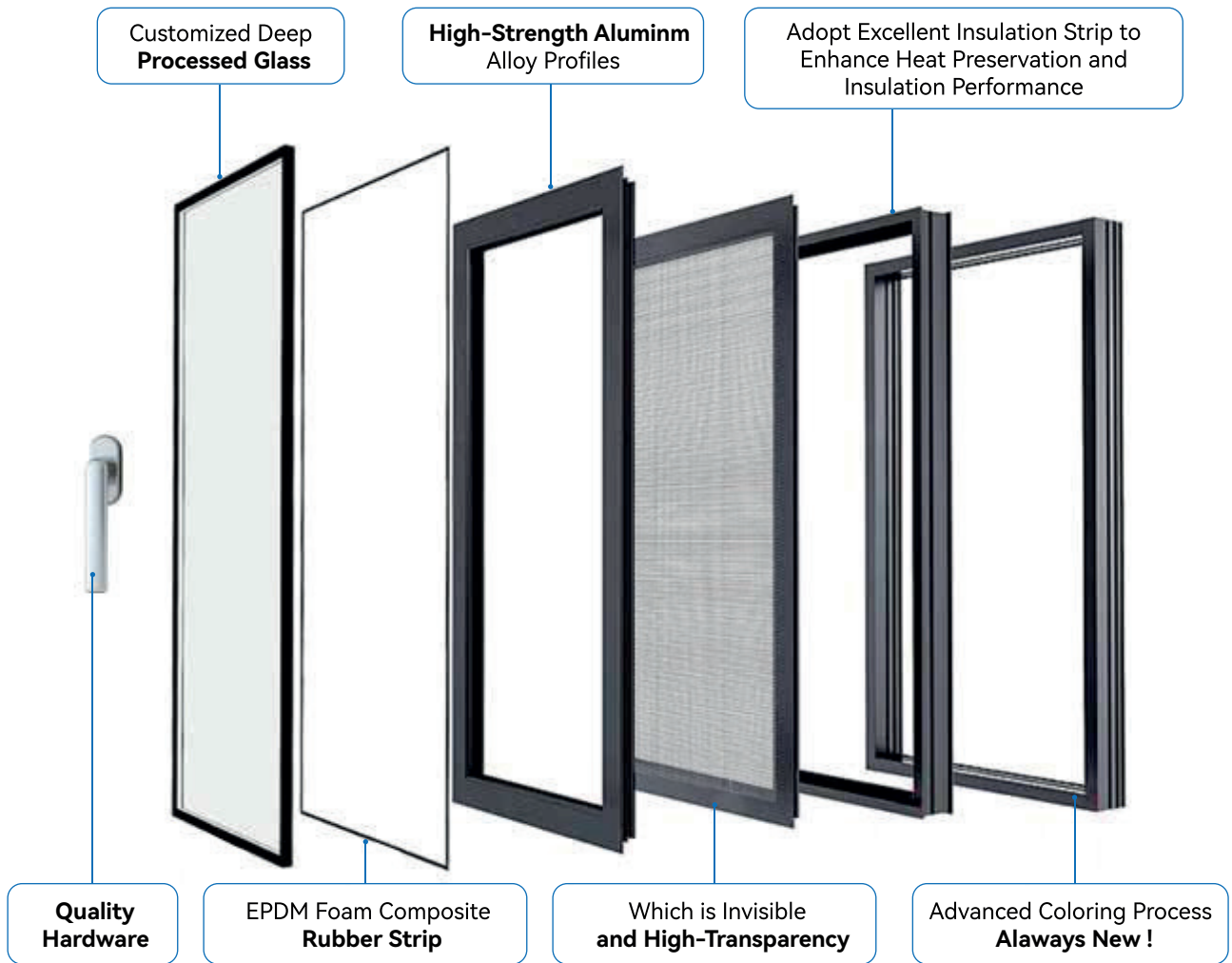
## GLASS RAILING

# OPTIONS

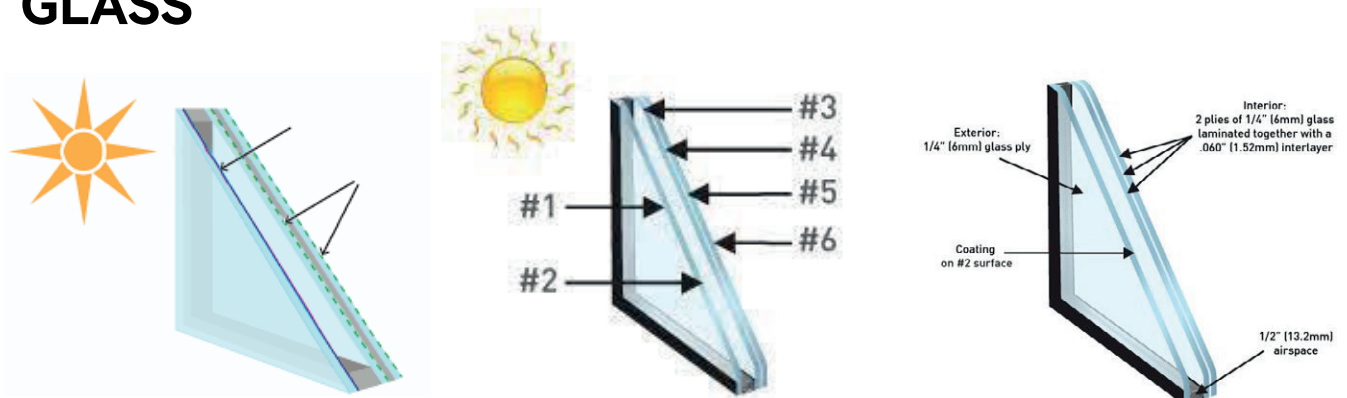
## DECORATIVE GRILLES



# SCREEN



# GLASS



# OPTIONS



**NORTHTECH**  
WINDOWS USA

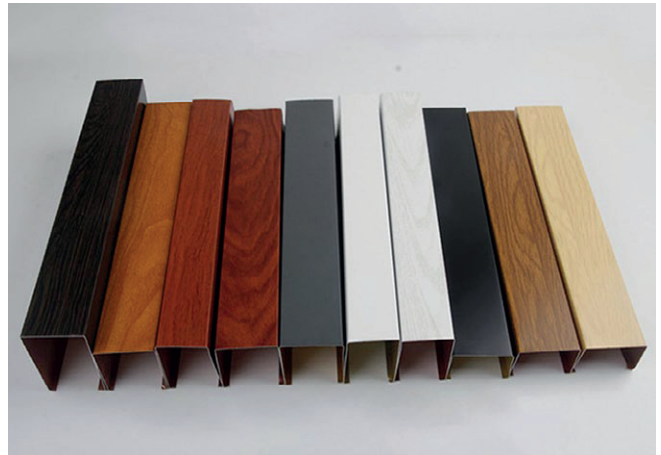
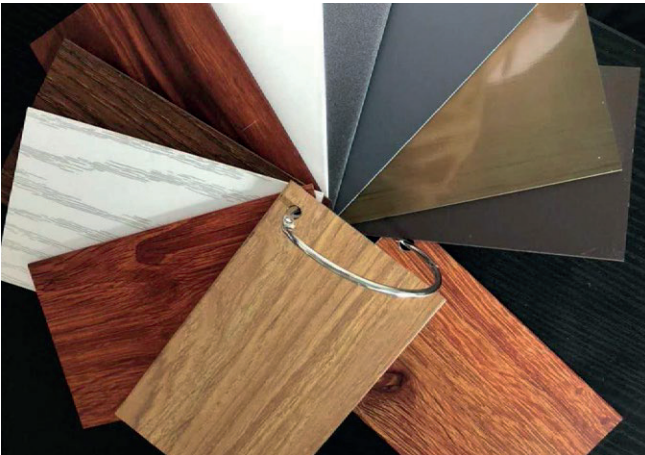
## ALUMINUM PROFILE COATINGS COLORS



## POWDER COATING



## WOODGRAIN COATING



## ANODIZING

---



## PVDF PAINTING

---

# OPTIONS

## HARDWARE

### SIEGENIA

#### SERIES



B1



B2



B3



B4



B5



B6

### HOPPE

#### SERIES



C1



C2



C3



C4



C5

### GU

#### SERIES



D1



D2



D3



D4



D5

# OPTIONS

## HANDLE



A1



A2



A3



A4



E1



E2



E3



E4



**Insulation**  
Performance



**Sound Insulation**  
Performance



**Watertight**  
Performance



**Airtight**  
Performance



**Wind Pressure**  
**Resistance**

# COOPERATION PARTNERS



TECHNOFORM

DOW CORNING



**SIEGENIA**<sup>®</sup>  
brings spaces to life

**Vitro**<sup>®</sup>

**HOPPE**<sup>®</sup> 

**RTHTECH**  
— WINDOWS USA

 **FERRO**

**Sobinco**  
OPENS YOUR LIFE

**GU**

# LOADING





# GLANCE AT WORKSHOP





# GLANCE AT WORKSHOP





# GLANCE AT WORKSHOP





# Indumotora Project

Location: Santiago, Chile

Configuration: Curtain Wall Sliding Doors

Year of Finish: 2016



**NORTHTECH**  
WINDOWS USA

# J&D Levis

Location: Toronto, Canada

Year of Finish: 2020





# GBCA Colleage

Location: Toronto, Canada

Year of Finish: 2023



## 202 Browns Project

Location: Etobicoke, Canada

Configuration: Windows, Doors

Year of Finish: 2023

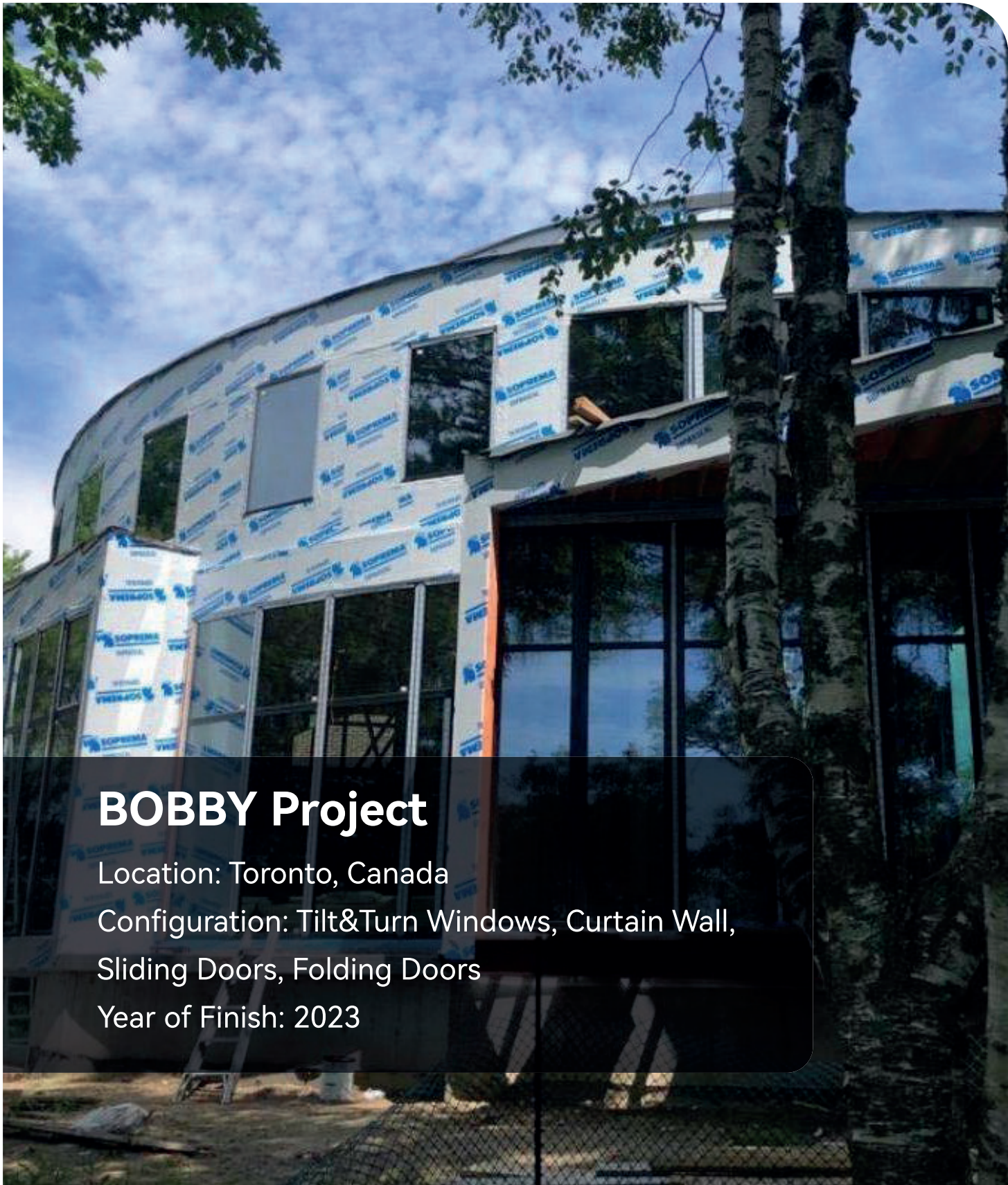


# Apartment In Poland

Location: Poland

Configuration: Casement Windows, Sliding Doors, Railings

Year of Finish: 2023



## **BOBBY Project**

Location: Toronto, Canada

Configuration: Tilt&Turn Windows, Curtain Wall,  
Sliding Doors, Folding Doors

Year of Finish: 2023





## UTSC College Project

Location: Scarborough, Canada

Configuration: Awning Windows

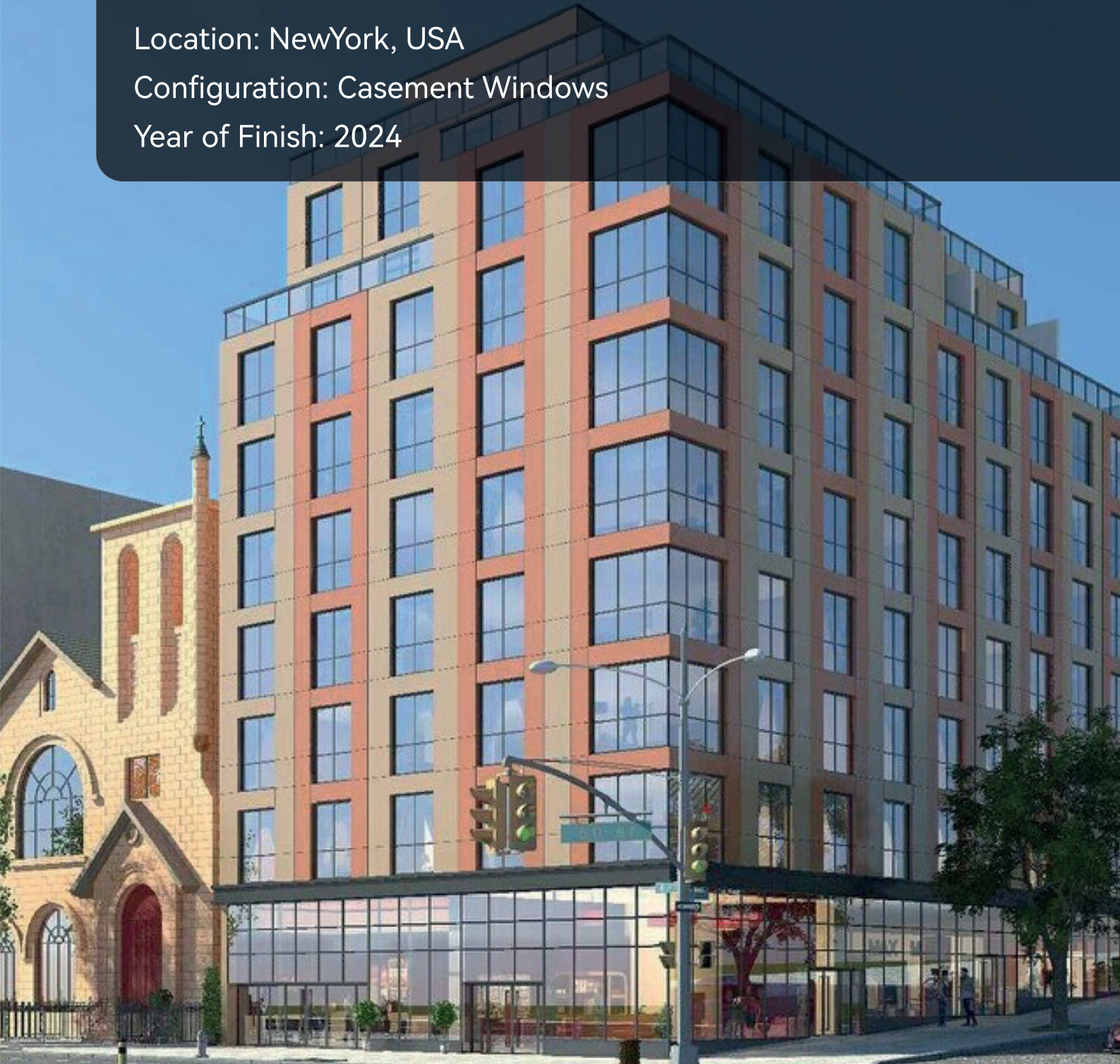
Year of Finish: 2024

# 4th Avenue Brooklyn

Location: New York, USA

Configuration: Casement Windows

Year of Finish: 2024



A low-angle photograph of a modern, multi-story building with a prominent cantilevered section. The building features a mix of concrete, glass, and metal. The cantilevered part has a series of balconies with glass railings. The sky is blue with some clouds.

## New York 240 Willoughby

Location: New York, U.S.

Configuration: Aluminium And Glass Railing, Etc

Year of Finish: 2024



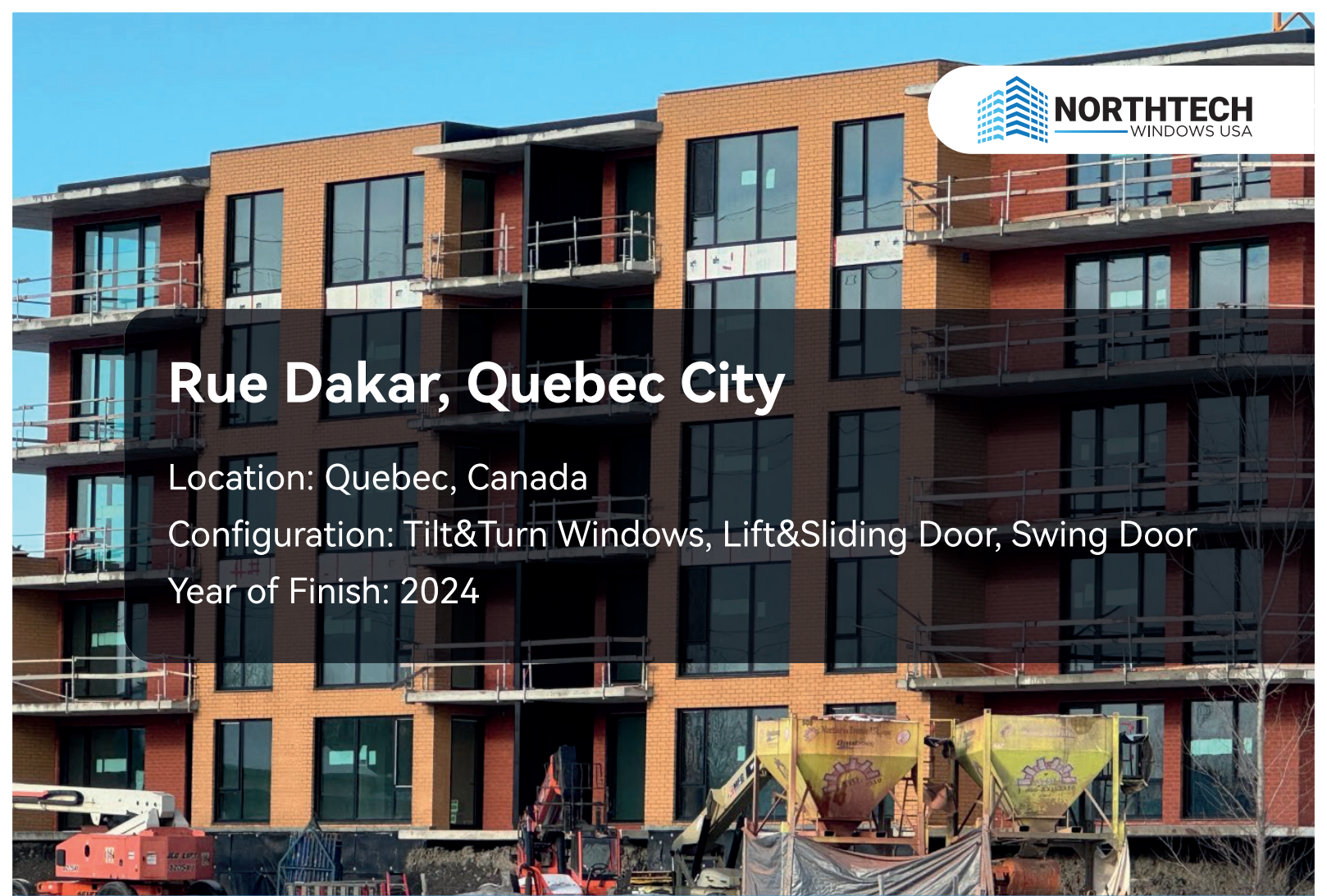
**NORTHTECH**  
WINDOWS USA

# Rue Dakar, Quebec City

Location: Quebec, Canada

Configuration: Tilt&Turn Windows, Lift&Sliding Door, Swing Door

Year of Finish: 2024





## 625 Fulton St Project

Location: 625 Fulton Street, New York City

Year of Finish: 2025



# New 2-Storey Detached Single Family Dwelling

Location: 1277 Hillview Cres, Oakville, On L6H 2C6

Year of Finish: 2025

## Kelowna Project (2025 Ongoing)

Style: Casement Window

Location: Kelowna City, Canada

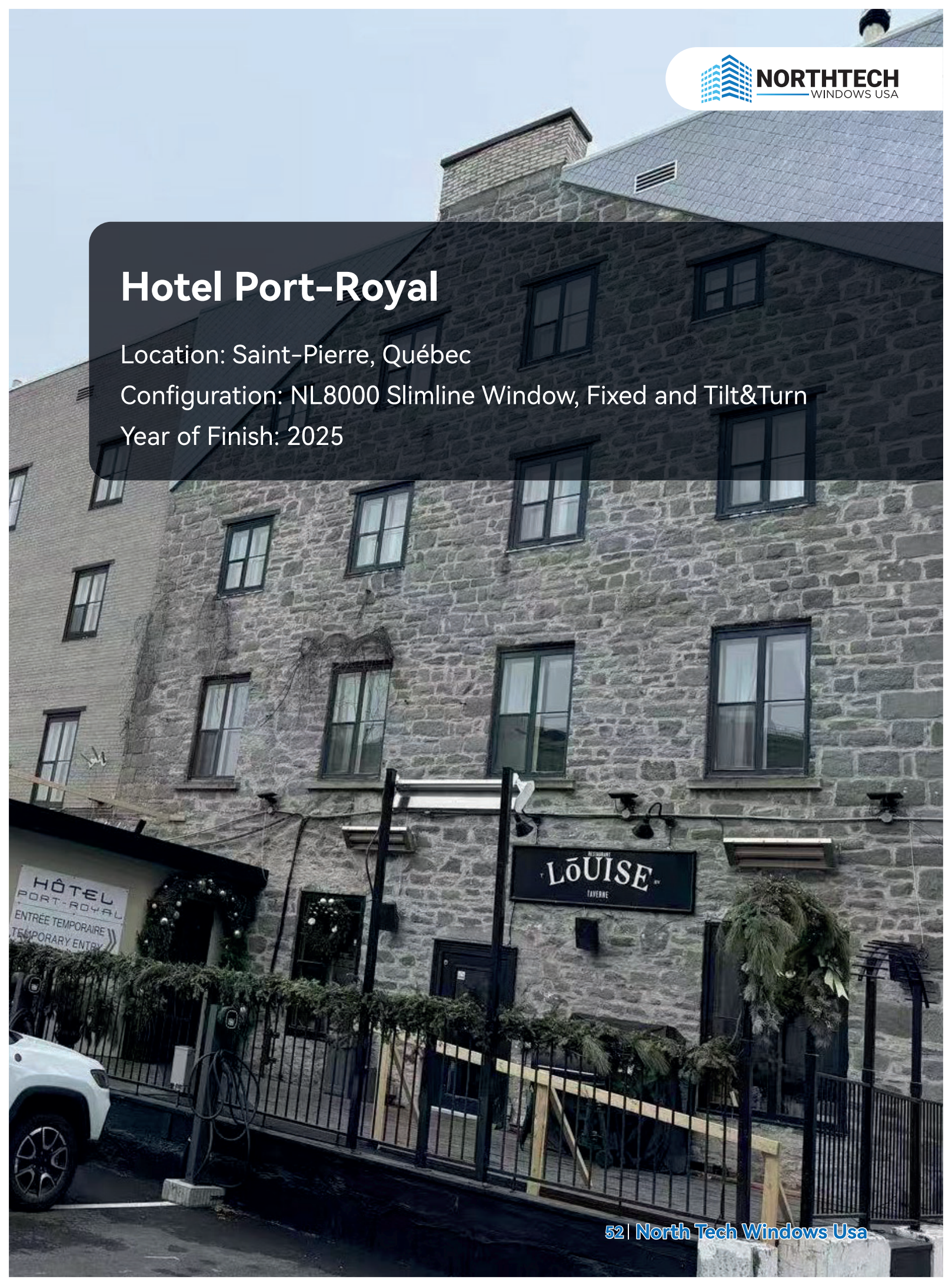


# Hotel Port-Royal

Location: Saint-Pierre, Québec

Configuration: NL8000 Slimline Window, Fixed and Tilt&Turn

Year of Finish: 2025





## Queens Ave West Van

Location: West Vancouver, Canada

Year of Finish: 2026

# 3078 Project in New York

Location: New York

Year of Finish: 2026

## TIPS:

Pictures shown are for reference only. Due to printing, there may be chromatic differences from the actual product. Please refer to the real product or contact your local dealer for confirmation. The factory reserves the right to modify or improve the product appearance without prior notice. **Please take the actual product as the standard.**



## CONTACT

---

-  [northtechwindowsusa.com](http://northtechwindowsusa.com)
-  [info@northtechwindowsusa.com](mailto:info@northtechwindowsusa.com)
-  +1 (201) 215-5731



Website